

ESSENTIAL MED 125

according to DIN 13277

Equipment

- 3 drawers and 1 shelf
- Standalone or undercounter installation
- Automatic defrosting
- Condensate evaporation
- Digital temperature display
- Potential-free contact
- Antifreeze
- Visual and audible alarm signal, even in the case of power failure
- Minimum/maximum temperature memory



Standalone or undercounter
installation with a large interior.



User friendly
with automatic defrosting and
electronic temperature con-
troller that can be installed into
furniture front.

- **External housing** made from galvanised sheet steel (rust-proof), with white, anti-scratch powder coating. Length of plug cable: approx. 2.8 m.
- **Adjustable feet** positioned at the front to compensate uneven floors
- **Interior** made from impact-resistant, white plastic with moulded-in shelves.
- **Interior** can be customised (surcharge may apply). See optional equipment.
- **Extra-thick insulation**, made from high-quality, compression-moulded and environmentally friendly material. Energy saving.
- **Door** with easy-to-replace plastic magnetic seal frame, lockable.
- **Door hinge** on the right-hand side (by default, see illustration), or the left-hand side, can be retrofitted.
- **Forced-air cooling**, switches off automatically when you open the door, ensures a uniform temperature and minimizes temperature deviations.
- **Automatic defrosting** with time limit and temperature monitoring.
- **Condensate evaporation** in the refrigerating machine interior.
- **Electronic temperature control** with membrane keyboard and digital temperature display in the interior.
- **Warning functions**: visual and audible alarm signal, even in the case of temperature deviations and power failure. In the case of power failure, the monitoring unit remains in operation for approx. 30 hours on battery power. Door open alarm after 60 seconds.
- **Alarms** can be forwarded via email or SMS using the Kirsch EVOLUTION CLOUD Module (optional).
- **Antifreeze** against sub-zero temperatures.
- **Statically ventilated refrigerating machine**, hermetically sealed, energy saving, low noise, easy to service.

Specification

Capacity	120 litres
Temperature setting	approx. +2 °C to +15 °C
Voltage	220 – 240 V, 50 Hz
Power consumption	115 watts
Normal consumption	1.28 kWh/24 h
Admissible ambient temperature	from +10 °C to +38 °C
Heat emission (max.)	190 watts
Overall dimensions (including distance from wall)	w x d x h = 54 x 53.5 x 81 cm
useable dimensions	w x d x h = 40.8 x 32 x 59 cm *
Exterior dimensions with door open at 90°	w x d = 54 x 105.5 cm
Shelf size	43.8 x 24 cm
Drawer inner dimensions	w x d x h = 40.8 x 32 x 5.6 cm
Max. load: drawer/shelf	13 kg/25 kg
Weight	Net weight 42 kg, gross weight 47 kg
Temperature deviation	+/-0.75 °C
Noise emission	42 dB(A)

*(Usable depth at the bottom is 15 cm less)

Optional equipment

KIRSCH refrigerators and freezers offer numerous equipment options that can be retrofitted.



Lockable drawer (top)

Protects special refrigerated goods from unauthorised access.



Condensation tray

for manual draining of condensation water.



Additional length and cross dividers

for the optimum organisation of your refrigerated goods.



Additional Shelves

Wire shelves, robust with load capacity up to 40 and 50 kg.



Access Port

Simple insertion of an external temperature sensor with integrated cable feed-through.



Equipped with castors

Equipped with steering and fixed castors.



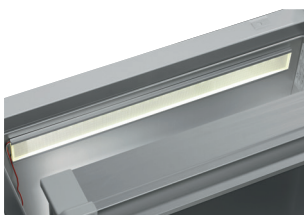
Door coupling

Connects the furniture door to the device.



Decorative frame

Made of stainless steel, allows to cover door with a decorative panel (thickness max. 2 mm).



side wall interior lighting

Optional, optimal and energy-efficient lighting for the interior using an LED lightstrip.



Glas door

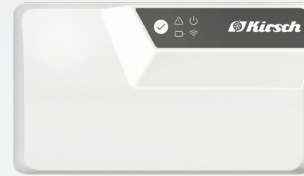
See clearly: avoid opening the door unnecessarily to inspect the contents.

Equipment for temperature documentation



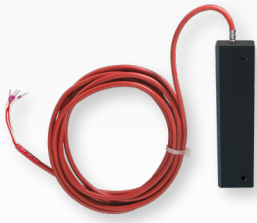
PC-KIT-NET

Automatic temperature documentation and monitoring via your network (LAN connection).



KIRSCH EVOLUTION CLOUD-Module

Maximum storage safety through optimal connectivity and real-time monitoring. *



External PT100/PT1000 with cold block

Additional temperature sensor for connection to existing/external monitoring system.



Circular blade temperature recorder

Depending on the model, it is either installed in the machine compartment panel of the refrigerator or freezer or integrated into an additional housing attachment.

* For more information about our cloud, please contact us.

Philipp Kirsch GmbH
Im Lossenfeld 14
77731 Willstätt

Telefon: +49 (0) 781 9227-0
Telefax: +49 (0) 781 9227-200
info@kirsch-medical.de

www.kirsch-medical.com



You can find our complete product overview on our website:
www.kirsch-medical.com