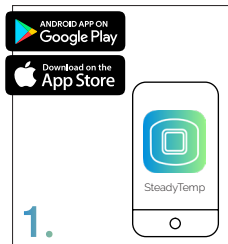


# STEADYTEMP®

## Quick Start Guide | Kurzanleitung



### Download app

App herunterladen



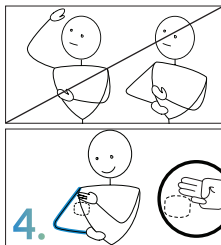
### Shower & dry

Duschen & abtrocknen



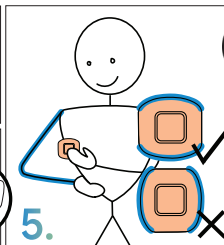
### Place hand on hip

Arm in Hüfte legen



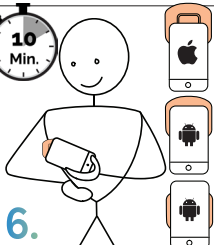
### Relax shoulder and find correct position

Schulter locker lassen & Position bestimmen



### Apply patch 3 finger width under arm

3 Finger breit unter Achsel anbringen



### After 10 minutes start the patch with NFC

Nach 10 Minuten Patch mit NFC starten

# Instructions for Use

## Gebrauchsanweisung



[www.steadytemp.info/ifu](http://www.steadytemp.info/ifu)