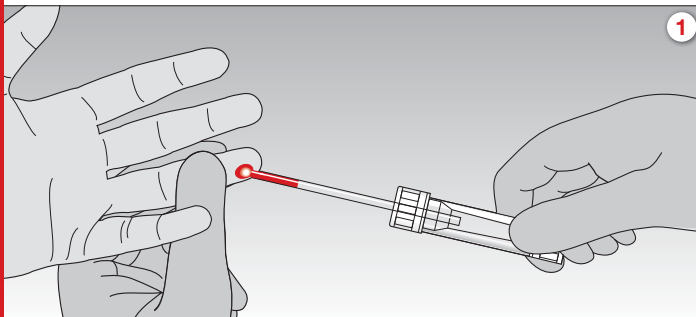
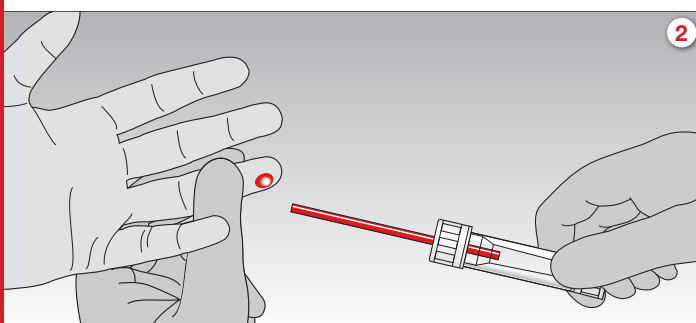


Microvette® 100/200

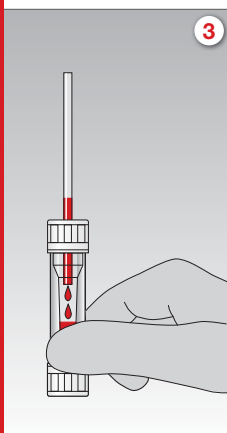
User Guide



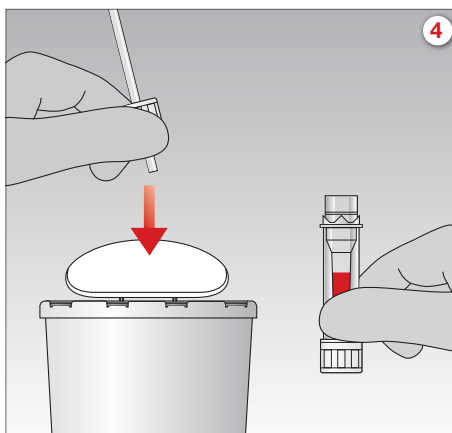
1. Collect blood with the assembled End-to-End 100 µl or 200 µl capillary. For collection, best results are achieved if the Microvette® is held in horizontal or slightly inclined position.



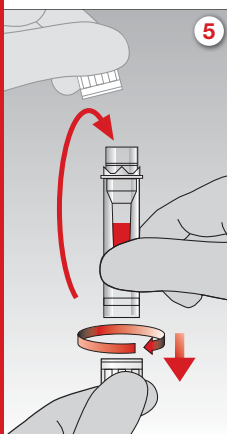
2. Collection is complete when the End-to-End capillary is entirely filled with blood.



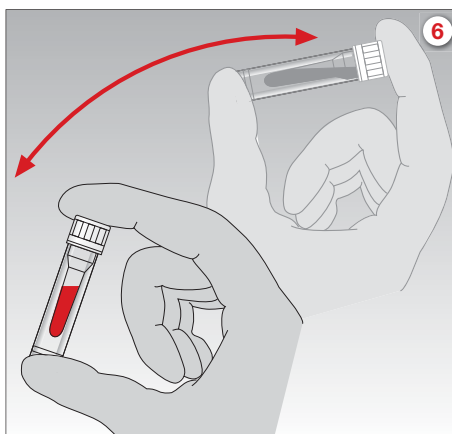
3. Hold the tube upright to allow the blood to flow from the capillary into the Microvette®.



4. Turn the cap to remove and discard the preassembled capillary as one unit.



5. Remove the cap from the base and seal the Microvette® ('click' position).



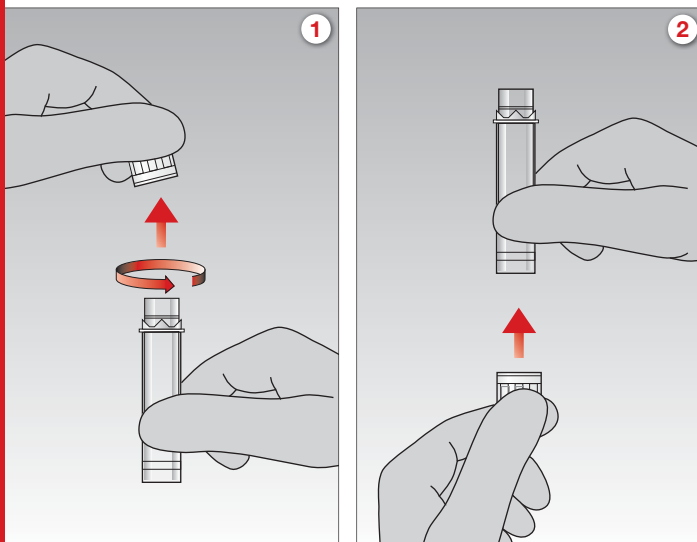
6. Mix sample thoroughly by inverting the Microvette®.

All patient blood specimens should be treated with standard precautions.

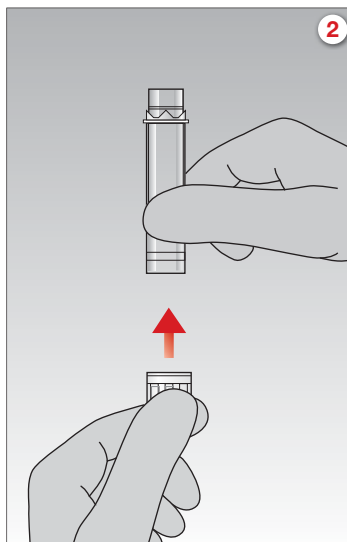
Wear gloves!

Microvette® 300/500

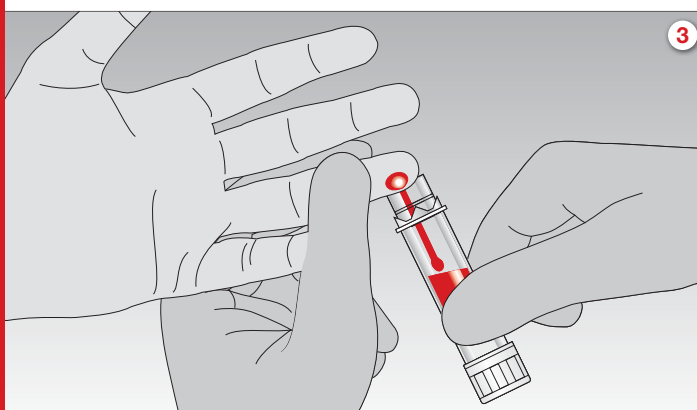
User Guide



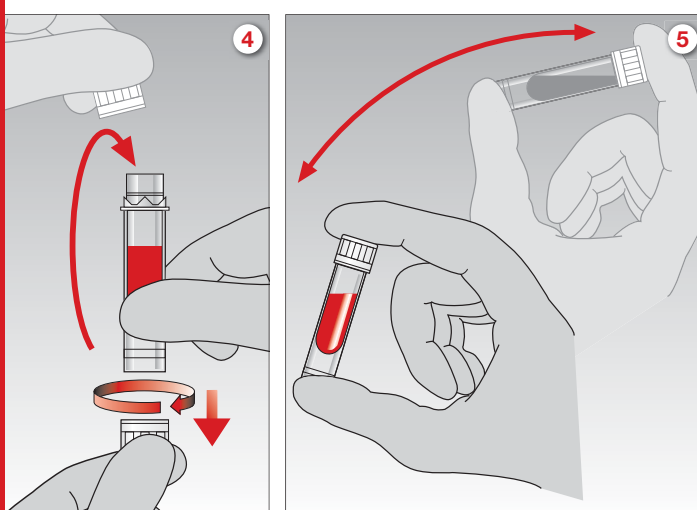
1. Turn the cap to remove it from the Microvette®.



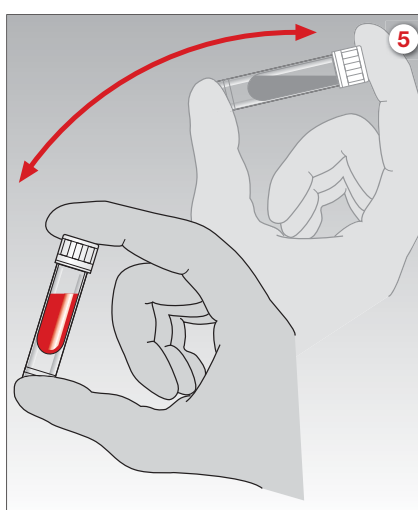
2. Attach the cap to the base of the Microvette®.



3. Collect blood by gravity-flow using any part of the collection rim.



4. Remove the cap from the base and seal the Microvette® ('click' position).



5. Mix sample thoroughly by inverting the Microvette®.

All patient blood specimens should be treated with standard precautions.

Wear gloves!

SARSTEDT AG & Co.
P.O. Box 12 20
D-51582 Nümbrecht
Phone +49 2293 3050
Fax +49 2293 305-122
info@sarstedt.com
www.sarstedt.com